

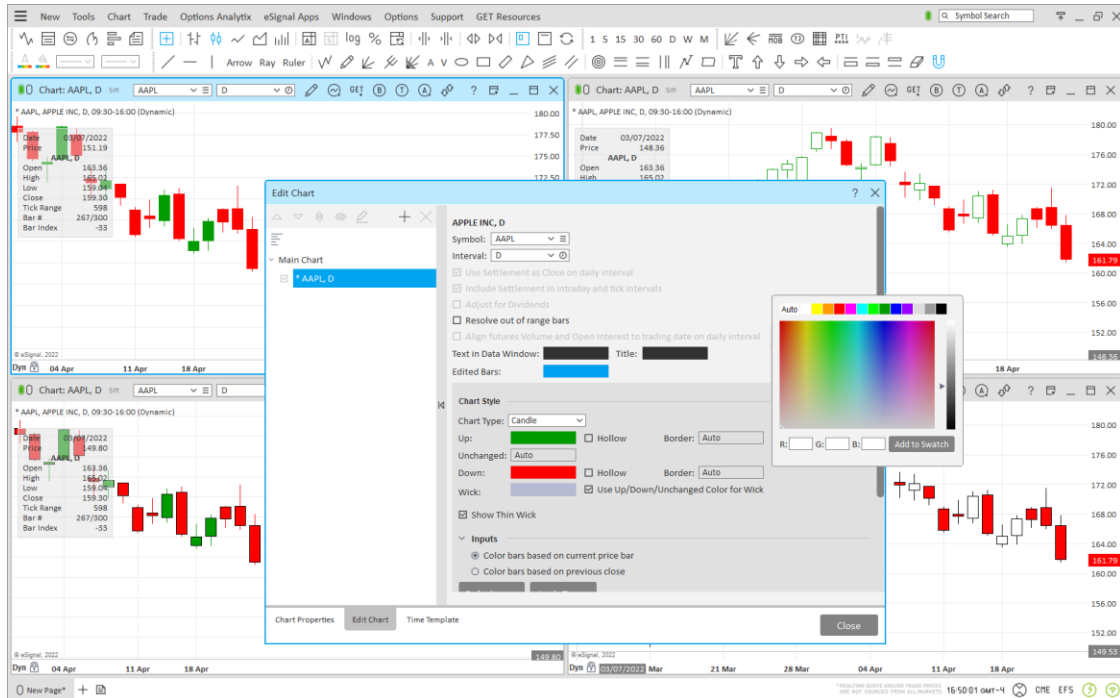
Version	Date
eSignal 21.2 Update	January 2023

eSignal 21.2 Update introduces several new features and enhancements for active traders and investors. Below is a summary of the new features, enhancements, and important bug fixes. For more detailed information about any of these features please visit the [eSignal KnowledgeBase](https://kb.esignal.com) (kb.esignal.com).

Chart

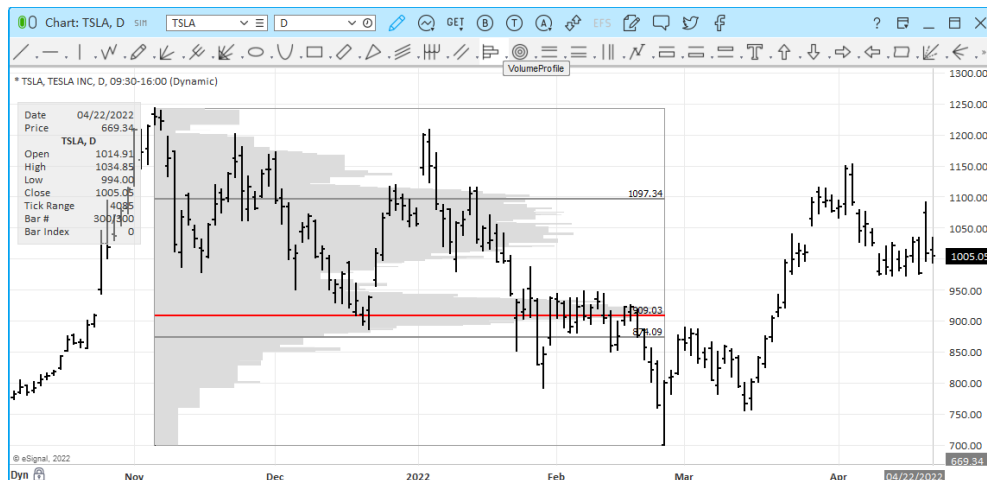
- **Candle/Heiken-Ashi** User Request

In version 21.1 we initiated a re-design of the Candle/Heikin-Ashi chart. This re-design is now finalized in 21.2 in which users have complete control of how the Candle/Heikin-Ashi bars are displayed. With version 21.2 users can now replicate the look of either the 12 or the 21 series or any variation thereof.



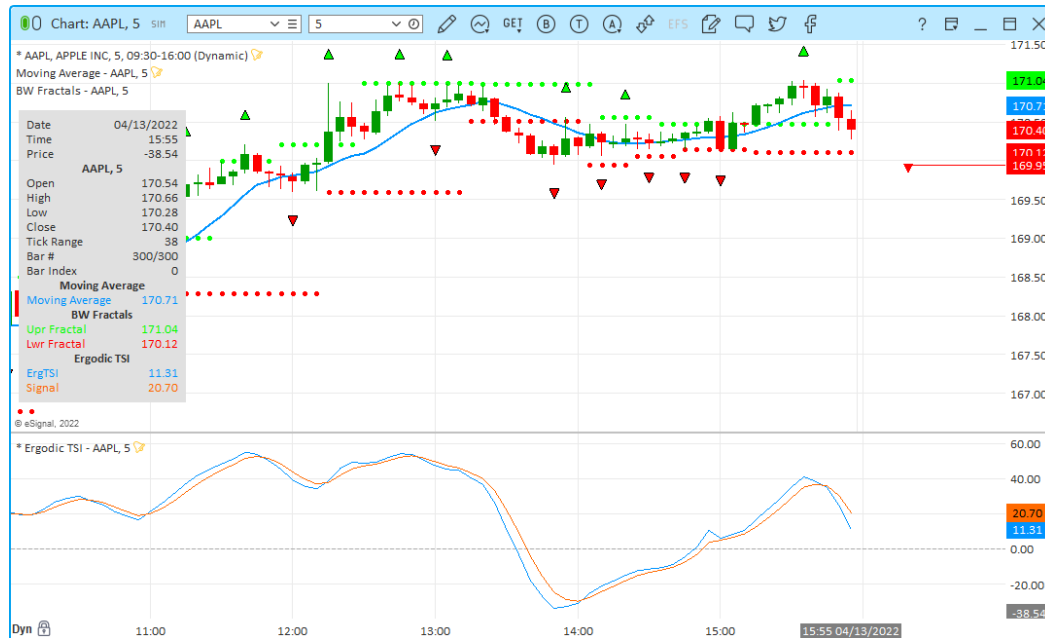
- **Volume Profile** User Request

This new drawing tool allows the user to draw a Volume Profile between any two user selected bars on a chart of any interval. In addition to the Volume profile it will also calculate and display the Point of Control (POC) and the Value Area High and Low (VAH and VAL).



Version	Date
eSignal 21.2 Update	January 2023

- Alert markers** User Request
 Any symbol and/or indicator with an enabled alert now displays a bell marker in its Status Line.



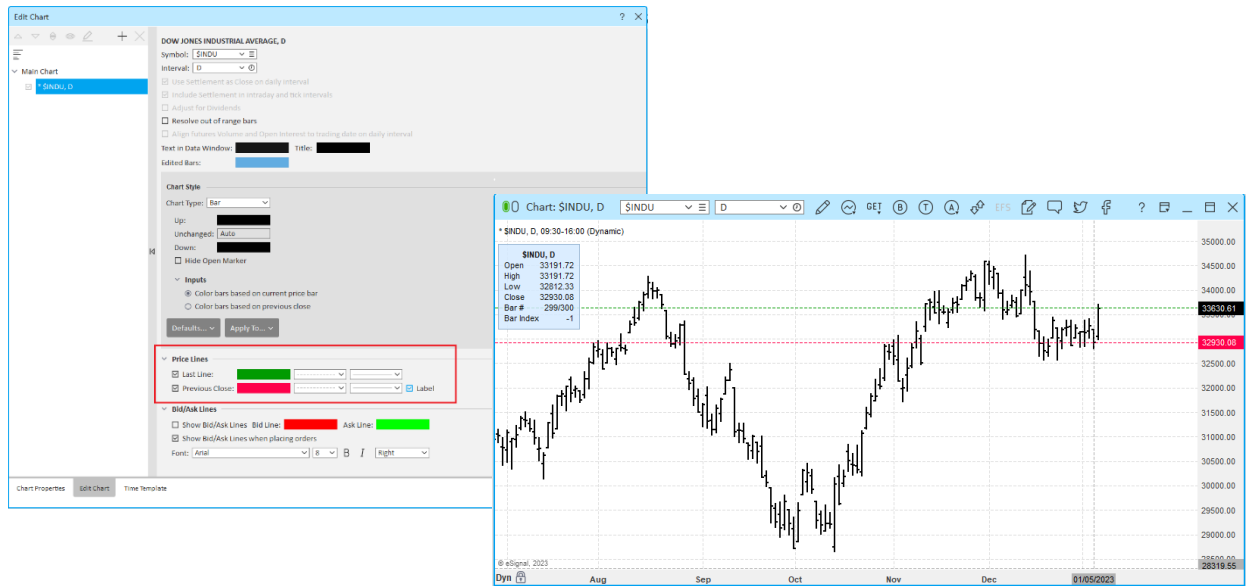
- Price Alerts** User Request
 Fired price alerts are now displayed in the Chart (and Market Profile) in their inverted color (same color displayed while flashing).



Version	Date
eSignal 21.2 Update	January 2023

- NEW Price Lines** User Request

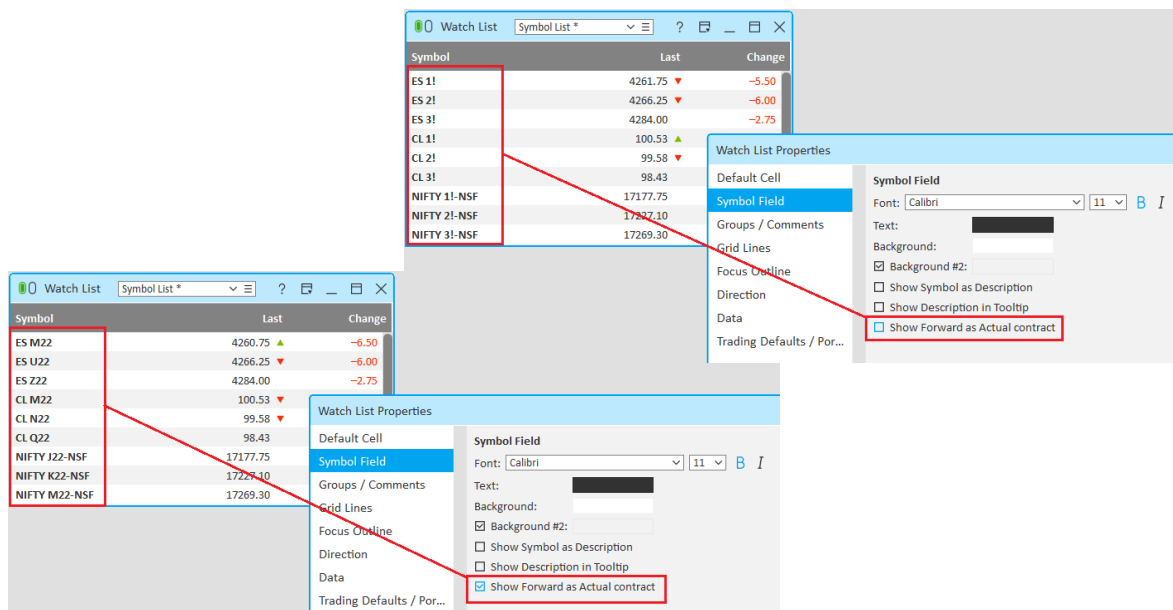
Users now have the option to plot horizontal lines that span the entire chart related to the Last and Previous Close.



Watch List/Dashboard

- Added option to display Forward as Actual contracts** User Request

Users now have the option to automatically display the Forward contracts (e.g. 1!, 2!, etc.) as the Actual contracts (e.g. M22, U22, etc.).



Version	Date
eSignal 21.2 Update	January 2023

- NEW Added option to display the Total of an Expression in Portfolio Mode** User Request
Users now have the option to display the Total of any Expression when in Portfolio Mode.

The screenshot shows the 'Watch List Properties' dialog box with 'Trading Defaults / Portfolio' selected and 'Show Totals for Expressions' checked. The 'Edit Columns' dialog box has 'Expression' selected. The 'Watch List' window displays a table with columns: Symbol, Last, AvPrice, Quantity, mVal, Open PL, %Return, Cost, Gain, and Expr. The total row at the bottom shows a total Gain of 20.00.

Symbol	Last	AvPrice	Quantity	mVal	Open PL	%Return	Cost	Gain	Expr			
MSFT	228.85	228.75	100	\$22885.00	\$10.00	+0.04%	\$22875.00	0.10	10.00			
AAPL	130.73	130.63	100	\$13073.00	\$10.00	+0.08%	\$13063.00	0.10	10.00			
Cash: \$9€								\$35958.00	\$20.00	+0.06%	\$35938.00	20.00

- NEW Added functionality to Sort by Conditional Formatting** User Request
Conditional Formatting now outputs the name of the Condition (be it generated by the application or user defined) which can then be used in a column to Sort the contents of that window.

The screenshot shows the 'Conditional Formatting' dialog box with 'Condition 3' selected. The 'Watch List' window displays a table with columns: Symbol, High, Low, Last, Prev High, Prev Low, Prev Close, and Condition. The rows are color-coded (green, red, yellow) and sorted by the 'Condition' column.

Symbol	High	Low	Last	Prev High	Prev Low	Prev Close	Condition
AAPL	137.25	134.13	135.72	134.52	131.66	134.76	Last > Prevnigh
CVX	161.32	176.18	175.67	177.94	175.66	177.36	Last > Prevnigh
DIS	100.95	99.00	100.12	99.60	98.01	99.40	Last > Prevnigh
FD	91.38	91.39	91.98	91.46	90.19	91.40	Last > Prevnigh
MSFT	273.29	270.03	274.90	268.96	269.88	268.80	Last > Prevnigh
MSFT	240.91	239.09	240.03	239.42	239.50	239.50	Last > Prevnigh
MSFT	235.2	235.13	235.65	235.23	234.26	234.57	Last > Prevnigh
USCO	46.94	46.10	46.11	46.50	46.81	46.80	Last > Prevnigh
ORW	35.48	33.28	33.41	34.17	33.78	34.40	Last > Prevnigh
IG	166.75	164.00	163.54	164.10	162.58	163.00	Last > Prevnigh
ORW	217.81	213.83	212.52	213.83	212.96	213.81	Last > Prevnigh
ORW	39.20	39.44	39.40	39.17	39.91	39.11	Last > Prevnigh
ORW	278.90	176.78	178.58	182.81	202.38	182.91	Last > Prevnigh
ORW	159.49	150.50	150.10	151.44	150.90	151.25	Last > Prevnigh
ORW	160.01	151.18	154.26	160.27	160.38	160.92	Last > Prevnigh
ORW	162.14	161.78	164.17	160.90	160.80	160.67	Last > Prevnigh
IG	16.20	16.28	16.07	16.81	16.87	16.86	Last > Prevnigh
AXP	156.10	153.86	153.95	156.25	152.30	155.76	Condition 3
BA	213.34	209.07	212.11	216.64	211.58	214.13	Condition 3
CAT	260.50	256.19	256.52	258.57	255.23	258.46	Condition 3
CRM	150.49	146.10	148.75	149.96	146.09	149.51	Condition 3
HD	335.16	327.50	327.50	332.39	326.00	331.21	Condition 3
IBM	147.18	145.10	145.10	146.10	144.01	145.89	Condition 3
JNI	174.58	172.40	172.40	174.01	172.38	173.43	Condition 3
PPH	141.54	139.22	141.11	143.49	134.80	143.01	Condition 3
ORW	129.05	127.83	128.37	129.23	128.66	128.85	Condition 3
PG	152.13	150.46	150.46	151.05	149.42	150.88	Condition 3
V	224.40	222.37	223.00	223.75	220.14	223.06	Condition 3
WBA	36.90	36.16	36.41	36.83	36.12	36.78	Condition 3
WMT	145.71	144.22	144.26	145.82	143.86	145.29	Condition 3

Version	Date
eSignal 21.2 Update	January 2023

Market Depth

- NEW** Added option to highlight levels above and below the Limit Up and Limit Down User Request
 Users now have the option to display the text of all levels above and below the Limit Up and Limit Down values in a user defined color.

Market Depth Properties

Levels

Level 1: [Color] Level 9: [Color]
 Level 2: [Color] Level 10: [Color]
 Level 3: [Color] Level 11: [Color]
 Level 4: [Color] Level 12: [Color]
 Level 5: [Color] Level 13: [Color]
 Level 6: [Color] Level 14: [Color]
 Level 7: [Color] Level 15: [Color]
 Level 8: [Color] Level 16: [Color]

Price Increments: 0.00

Highlight levels above and below Limit Up and Limit Down: [Color]

Total
 Calculate Total based on: Price

Market Depth: TSLA | TSLA | NASDAQ Level2

Bid 123.19 Bid Size 8 Low 120.51 Change 4.37 Percent Change +3.68% Last 123.22 Limit Up 135.07
 Ask 123.22 Ask Size 9 High 125.95 Change(Open) 1.13 Percent Change(Open) +0.93% Volume* (Total) 18.4M Limit Down 110.51

Market Maker	Bid	Size	Time	Market Maker	Ask	Size	Time
arcx	123.19	8	07:59:58 PM	edgx	123.22	9	07:59:55 PM
edgx	123.16	1	07:59:55 PM	arcx	123.22	8	07:59:58 PM
bats	115.00	2	07:59:58 PM	bats	127.50	1	07:59:58 PM
amex	50.00	1	07:59:31 PM	amex	240.00	3	07:59:31 PM

Shell

- Added Recent Last field to Price Alerts** User Request
 We added a new field to the Price Alerts called Recent Last. This new field returns whichever is the most recent between the Last and the Extended Hours Last. This means that users no longer need to duplicate the same Price Alert for Regular or Extended Hours Trading.

Manage Alerts | Price Alerts

Interval Alerts
 Study Alerts
 Drawing Alerts
 Expression Alerts
 Conditional Alerts
 Field Alerts
 News Alerts
 Time Alerts

Alert Condition: **Recent Last** = 161.50
 At Or Above: 161.50

Rearm
 Percentage Change: 1.00
 Incremental Change: []

Expiration Time: 11:59:00 PM / 04/24/2022

Alert Action
 Play: alerttarget.wav
 Voice: %SYM %INST %PROPS
 Show Pop-up
 Send e-mail

Message: %SYM %INST %PROPS. Fired value: %VALUE at %TIME

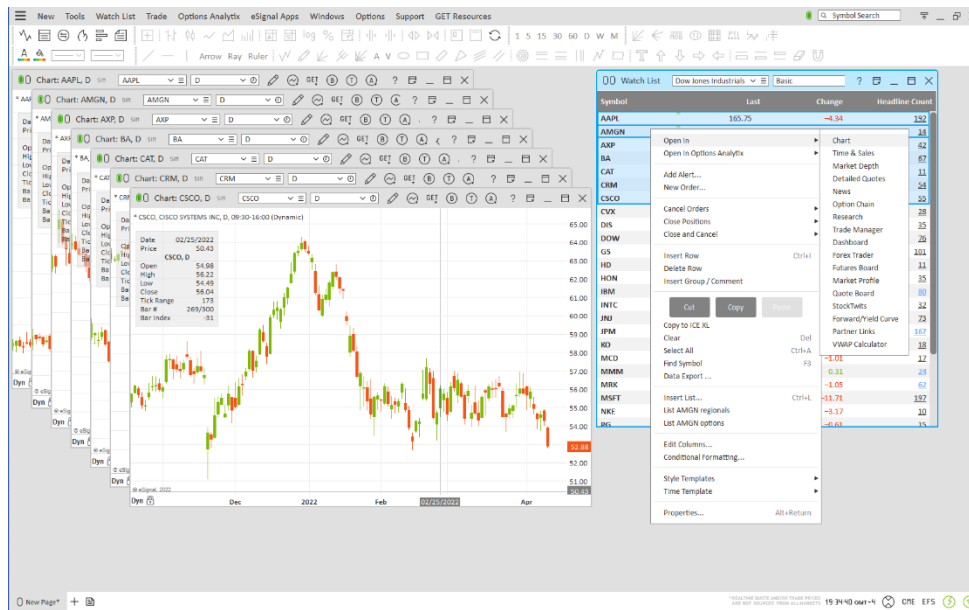
Show Label on Chart and Market Profile: [Color]

Accept Cancel Close

Version	Date
eSignal 21.2 Update	January 2023

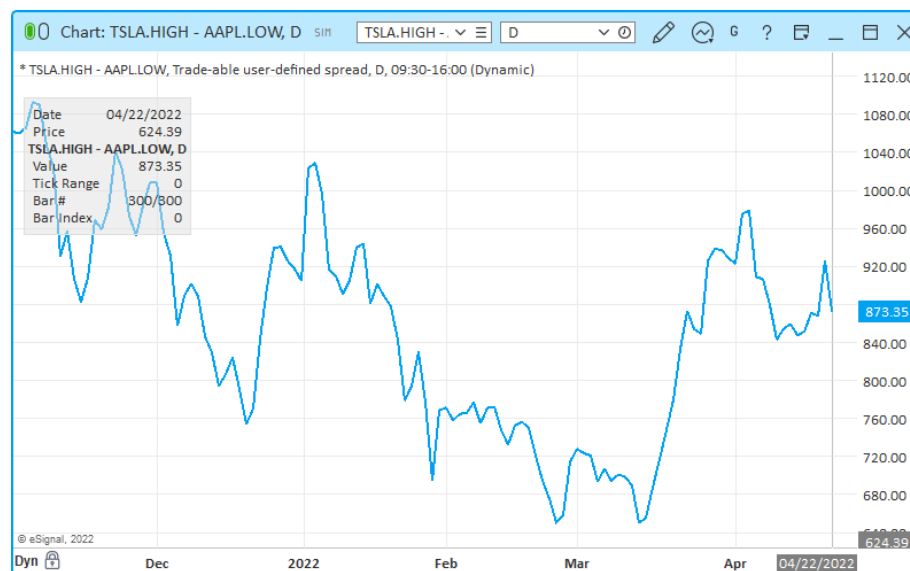
- **Enhanced the Open In... function** User Request

When selecting multiple symbols in a grid window and then selecting Open In.. <window type> this will now open in a single step a selected window type (e.g. Chart, T&S, Market Depth, etc.) for each of the selected symbols. If the target window type is another grid window (e.g. Quote Board, Dashboard, etc.) it will open a single window of that type and populate it with the selected symbols.



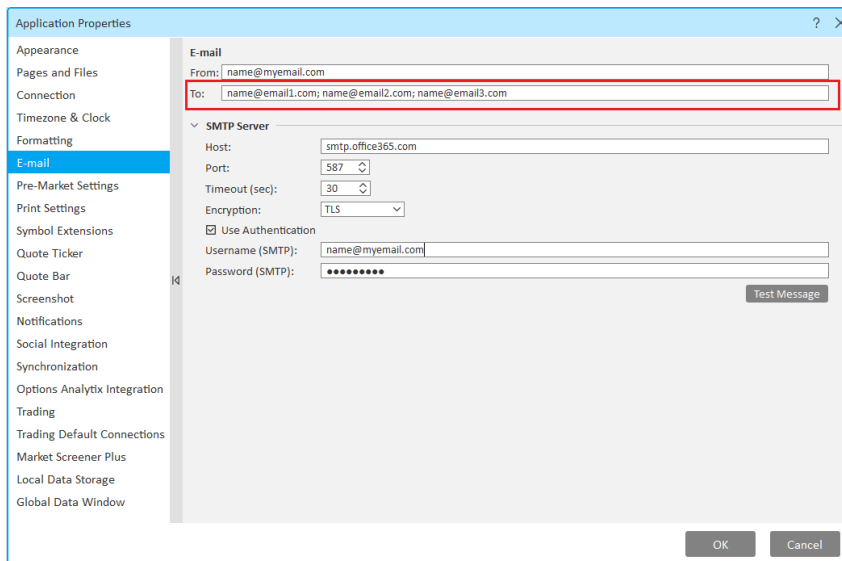
- **Added option to individually retrieve the OHLC of a symbol** User Request

In version 21.2 it is now possible to retrieve the OHLC of any given symbol as a symbol itself. This is accomplished by following the actual symbol with a period and then adding the desired field (e.g. MSFT.LOW). Amongst other things this now allows to easily create spreads between the Open, High, Low or Close of multiple symbols (e.g. TSLA.HIGH – AAPL.LOW).

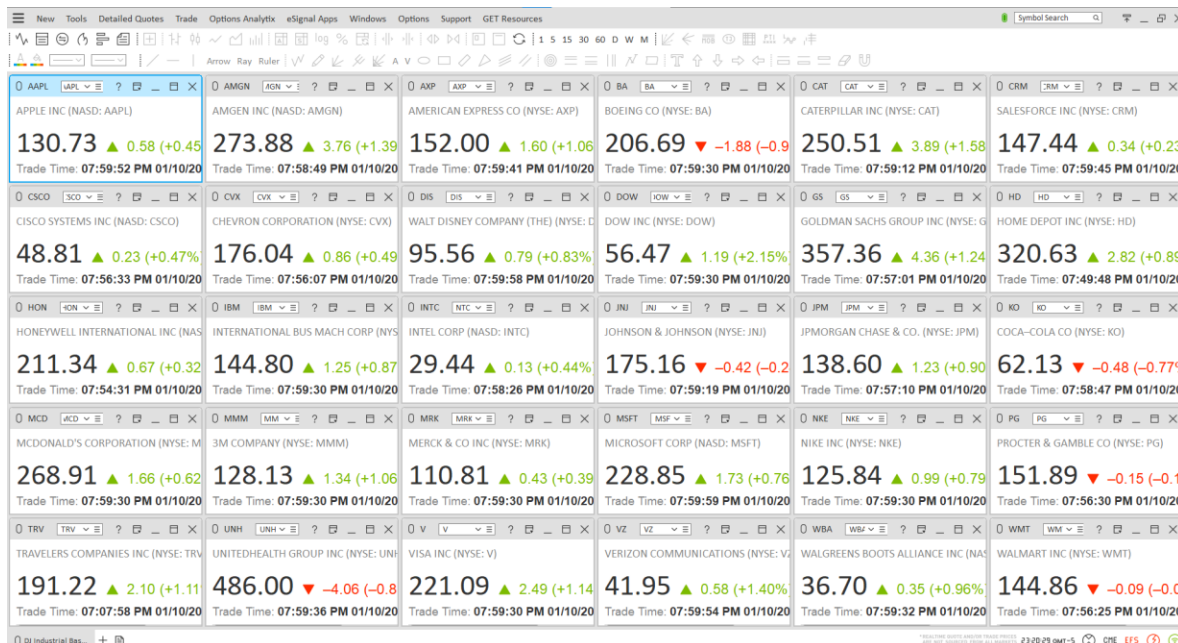


Version	Date
eSignal 21.2 Update	January 2023

- Enhanced the E-mail functionality** User Request
 Starting with version 21.2 it is now possible to send e-mails to up to 3 e-mail addresses concurrently.



- NEW **Added DJ Industrials Basic Quotes page**



Version	Date
eSignal 21.2 Update	January 2023

Other Enhancements and Fixes

- Updated Options Analytix
- Updated ATM PowerTech...by VIRATECH studies.
- Updated the design of the Manage Alerts dialog.
- **NEW** Added “All Symbols and “All Intervals” to the Symbol and Interval filters of the Alert Ticker, Alert Log, Manage Alerts, Manage Studies and Default Drawing Tools windows.
- **NEW** Added a Basic Quote style template to the Detailed Quotes window (an example of this style template can be seen in the DJ Industrials Basic Quotes page).
- **NEW** When the application is set to Compact mode new pages will now be created in Detached mode.
- **NEW** Added a warning dialog to the Option Chain and Hot List windows when deleting columns used in Conditional statements.
- **NEW** Fixed an issue with the Fibonacci drawing tools where the 1.00 (100%) level was not correct when plotted on a Logarithmic scale.
- **NEW** Fixed an issue where the Settlement would not be applied in real time on Daily charts of some specific futures (e.g., ES, NQ).
- **NEW** Fixed an issue where the Open In... function would not work correctly in Portfolio Mode when using Subtotal lines.
- **NEW** Fixed an issue in the Option Chain and Hot List windows where the application would terminate when removing any column used in Conditional statements.
- Fixed an issue with the Chart’s Add Alert function where the settings were not being saved correctly.
- Fixed an issue where spreads with symbols starting with a number could not be resolved.
- Fixed an issue where the Status indicators of symbols was not being displayed.
- Fixed an issue where the End Types of Trend Lines could be colored incorrectly.
- Fixed Ownership Summary in the Research window.
- Other minor enhancements and fixes.